

# Driver Committee Successes



# What makes our Driver Committee work

A yellow vintage sports car, possibly a Porsche Carrera GT, is shown driving on a racetrack. The car is in the foreground, slightly to the left, and is moving towards the right. Another similar car is visible in the background to the right. The track is paved and has some markings. The background shows a grassy area and a blue sky.

**Our  
Committee is  
experienced**

- **We draw from a pool of 9 or 10 volunteers**
- **All are active or past vintage racers**
- **All have at least 10 years experience and many have over 20**

# What makes our Driver Committee work

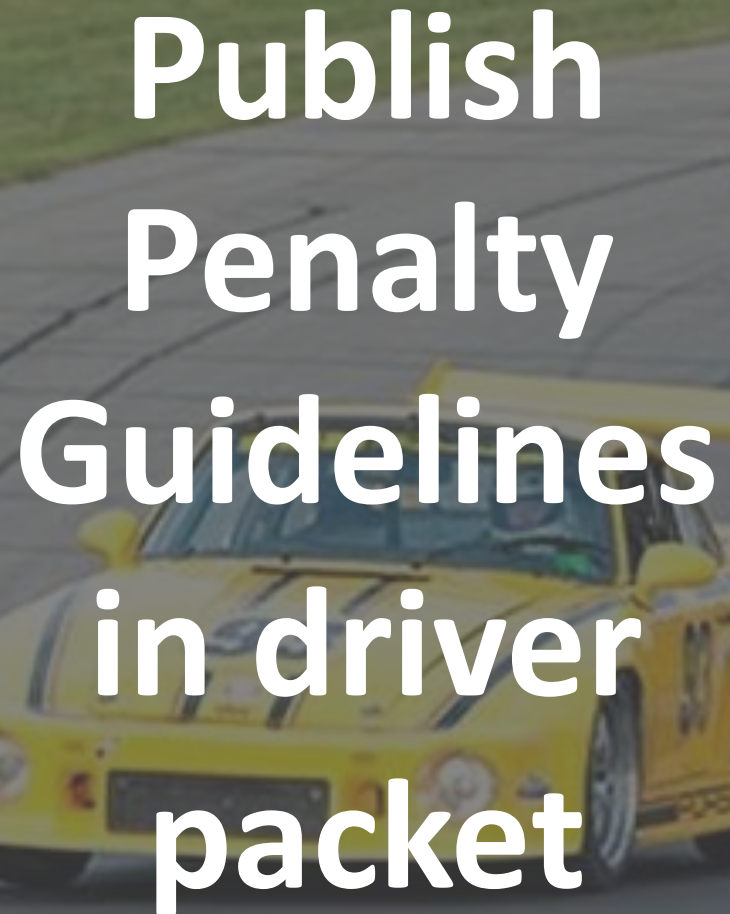


**Establish  
driver  
expectations  
before event**

- **Emphasize driver safety and etiquette**
- **Maintain a margin for unexpected errors**
- **Unsafe, dangerous, or unsportsmanlike driving will not be tolerated**



# What makes our Driver Committee work



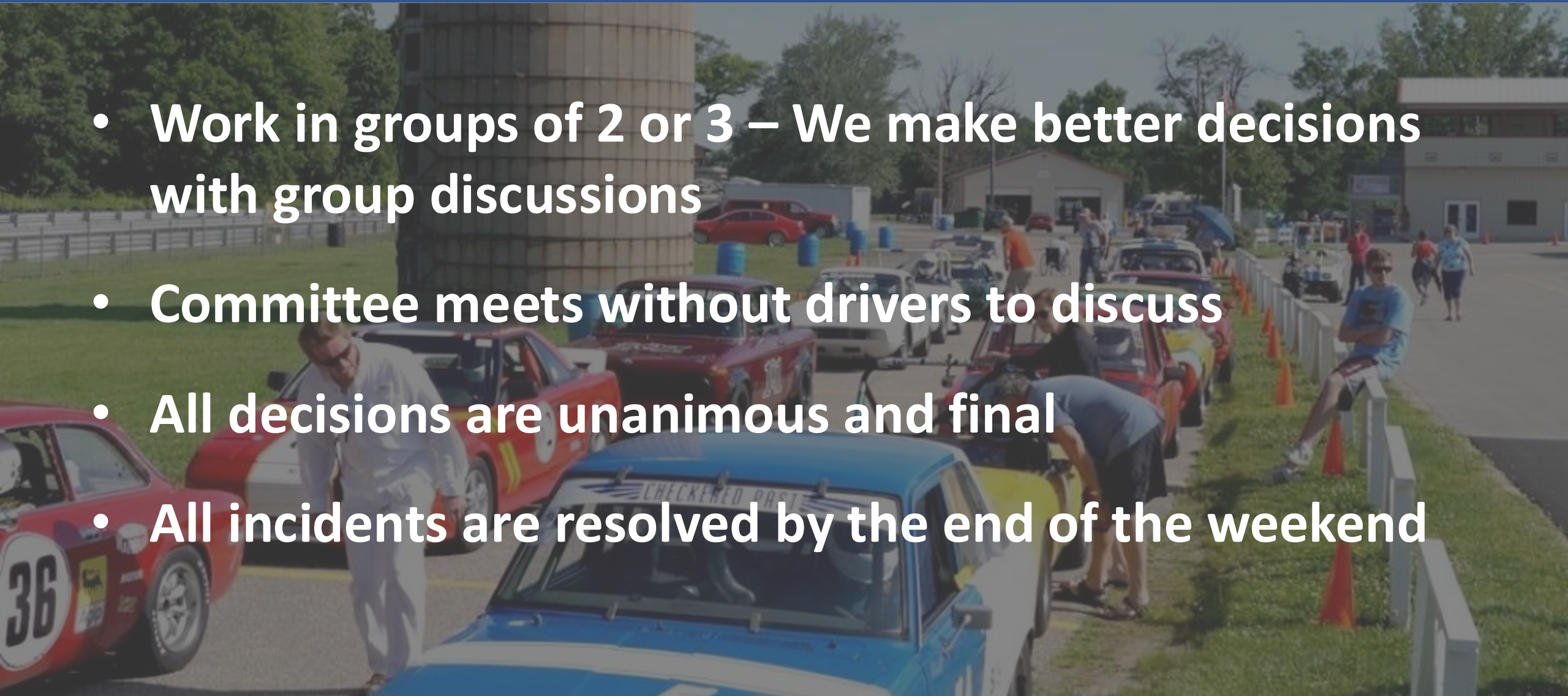
**Publish  
Penalty  
Guidelines  
in driver  
packet**

DAMAGE LEVEL	MINIMUM ACTION	MAXIMUM ACTION
NONE:	None	3 Months' Probation
SLIGHT:	Up to 3 Months' Probation	6 Months' Probation
MODERATE:	Up to 4 Months' Probation	13 Months' Probation
HEAVY:	13 Months' Probation	Suspension
PERSONAL INJURY	6 Months' Probation	Suspension

***Deviations are allowed at the discretion  
of the Drivers Committee***

# Driver Committee Rules

- Work in groups of 2 or 3 – We make better decisions with group discussions
- Committee meets without drivers to discuss
- All decisions are unanimous and final
- All incidents are resolved by the end of the weekend





# Driver Committee Procedures

- Collect info and inspect involved cars
  - Get drivers written report BEFORE individual interviews
  - Videos (track or private) are helpful
  - We make no decisions in front of drivers
  - Inform all involved drivers of final findings
- 
- A background image showing a red sports car and a yellow sports car on a track. The red car is in the foreground, and the yellow car is behind it. They are on a paved track with green grass and trees in the background.

# Driver Committee Experiences

- Drivers often have a different perception of reality
- Showing an 'at fault' driver a video may be helpful
- Remaining calm and respectful is usually effective
- Initially sometimes a driver needs to vent
- We make a summary sheet of each event to allow for historic data analysis

# Example Summary Sheet

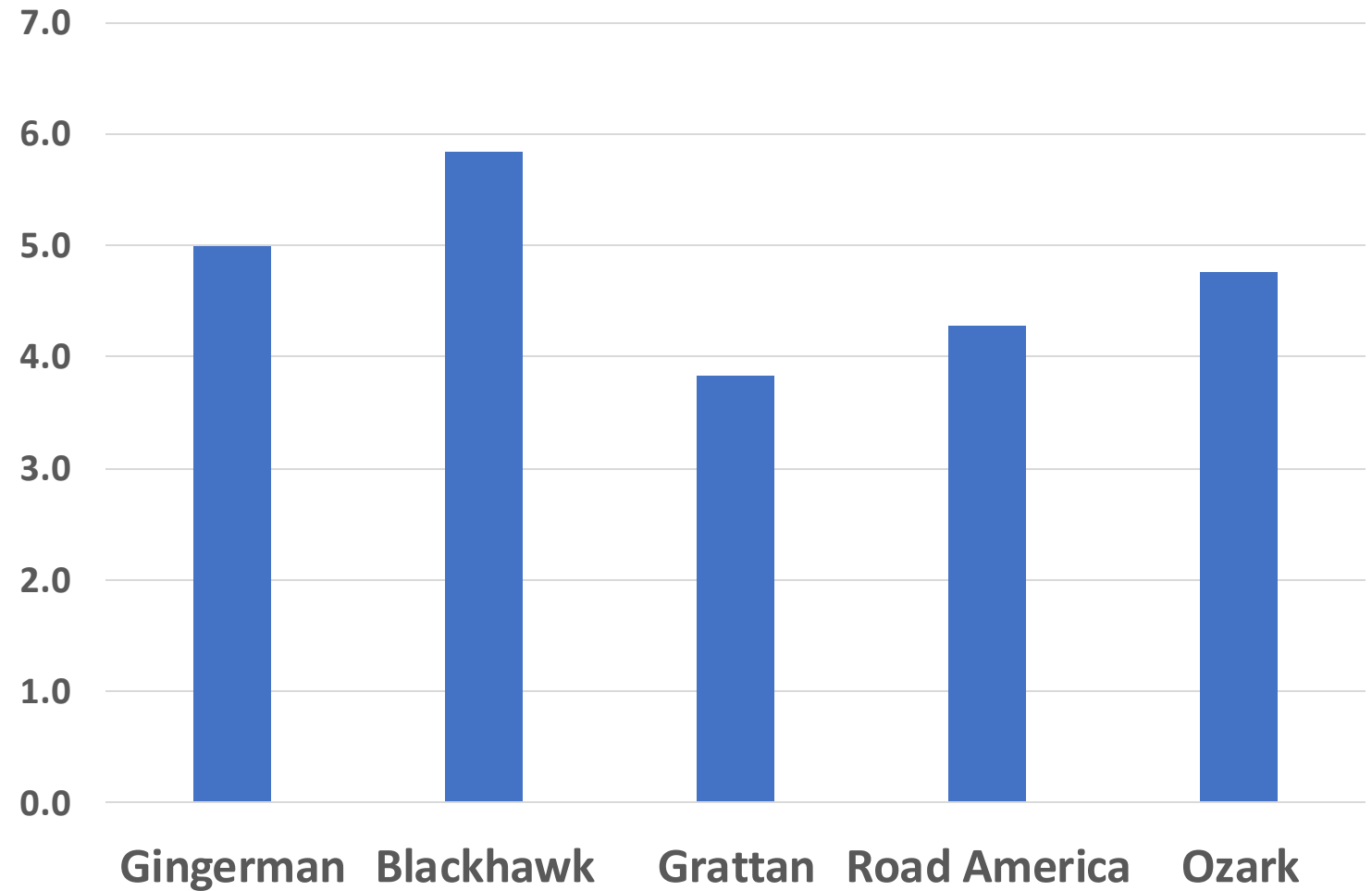
## Grattan 2024

Incident	Date	Group	Car # & Driver	# of Cars	Issue	Info Discovered	Final Action
1	8/9/24	8	Rick #60 Jeff #12 John #20	3	3 car contact going into turn 2	Car 60 was leading and car 12 coming up on the inside. Car 12 thought he was even or leading into the turn but 60 did not see the attempted pass. As 60 came toward apex, 12 braked hard trying to avoid 60 causing 20 to hit 12 in the rear.	Jeff and Rick were placed on probation for the weekend
2	8/10/24	FF	Sharon #97	1	Car 97 spun and hit the guard rail in turn 3	Car 97 hit some oil or substance on track causing spin	Racing incident
3	8/10/24	FF	Bob #38 Mire #88 William #97	3	Car 971 ran into and under car 38 pushing him into car 88	Car 38 suffered suspension damage on the left rear and car 88 had minor damage on rear right tire. Car 971 was not aware that cars ahead had slowed and could not stop. He did not fill out Drivers statement and left track	Bill is on probation for 7 months which is doubled to 14 for not following instructions and protocol. His driving competence needs to be monitored very closely.
4	8/10/24	8	Alex #62 Sam #5	2	2 cars touched at the exit of turn 2	Very minor contact and damage between turn 2 and 3	Racing incident



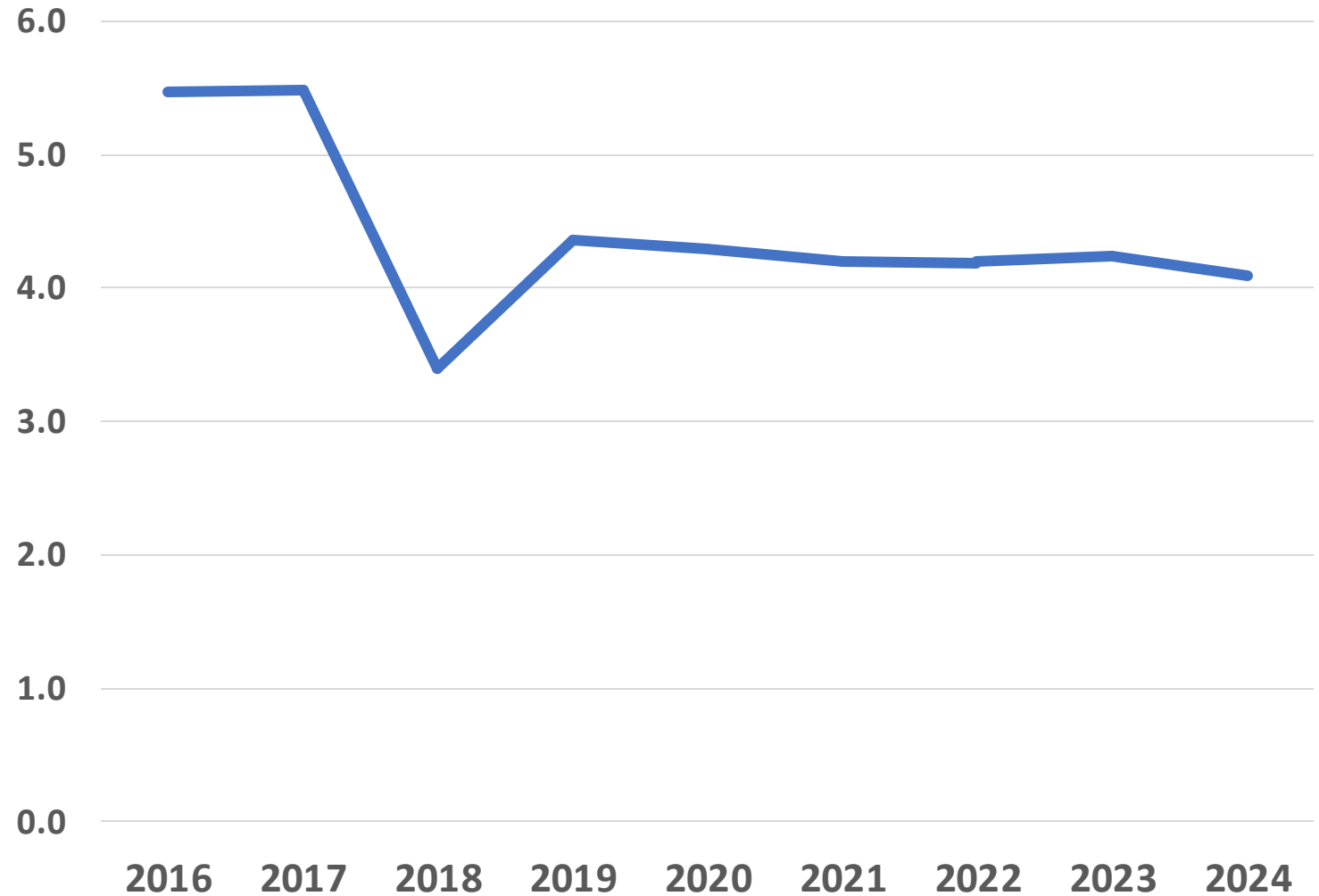
# Historic data analysis

## 9 Year Average Incidents by Track per 100 entrants



# Historic data analysis

**Average Incidents per 100 entrants**



# THANK YOU!

# VSCDA

VINTAGE SPORTS CAR DRIVERS ASSOCIATION

